

RCS2-RT6

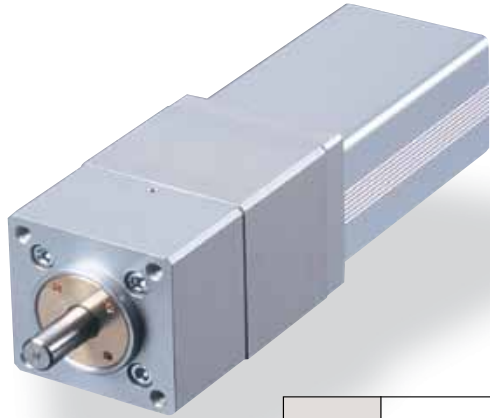
ROBO Cylinder Rotary Straight Motor Model 64mm Width 200V Servo Motor

■ Configuration: **RCS2** — **RT6** — **I** — **60** — **18** — **300** — — — **L**

Series — Type — Encoder — Motor — Deceleration Ratio — Oscillation Angle — Compatible Controllers — Cable Length — Option

I: Incremental 60: 60W Servo Motor 18: 1/18 300: 300degrees T1:XSEL-J/K N: None L: Limit switch (equipped as standard)
 T2:SCON P: 1m S: 3m M: 5m X : Custom R : Robot cable
 SSEL XSEL-P/Q

* See page Pre-35 for an explanation of the naming convention.



Technical References P. A-5

POINT Notes on Selection

- (1) The thrust load is the mechanical strength of the output axis at rest. When selecting, take into account the load moment and the load inertia.
- (2) The rated acceleration while moving is 0.3G.

| Actuator Specifications | | | | | | Stroke and Maximum Speed | |
|----------------------------|------------------|--------------------|--------------------|--------------------------------------------------|-------------------------|----------------------------------------|-----------|
| ■ Lead and Load Capacity | | | | | | ■ Stroke and Maximum Speed | |
| Model | Motor Output (W) | Deceleration Ratio | Rated torque (N·m) | Allowable Moment of Inertia (kg·m ²) | Oscillation Angle (deg) | Oscillation Angle / Deceleration Ratio | 300 (deg) |
| RCS2-RT6-I-60-18-300-①-②-L | 60 | 1/18 | 2.4 | 2.5×10 ⁻² or less | 300 | 1/18 | 500 |

Legend: ① Compatible controller ② Cable length (Unit: degrees/s)

| Stroke List | |
|-------------------------|----------------|
| Oscillation Angle (deg) | Standard Price |
| 300 | - |

| ② Cable List | | |
|-----------------|-----------------------|----------------|
| Type | Cable Symbol | Standard Price |
| Standard Type | P (1m) | - |
| | S (3m) | - |
| | M (5m) | - |
| Special Lengths | X06 (6m) ~ X10 (10m) | - |
| | X11 (11m) ~ X15 (15m) | - |
| | X16 (16m) ~ X20 (20m) | - |
| Robot Cable | R01 (1m) ~ R03 (3m) | - |
| | R04 (4m) ~ R05 (5m) | - |
| | R06 (6m) ~ R10 (10m) | - |
| | R11 (11m) ~ R15 (15m) | - |
| | R16 (16m) ~ R20 (20m) | - |
| | | |

* See page A-39 for cables for maintenance.

| Actuator Specifications | |
|----------------------------------|--------------------------------------------|
| Item | Description |
| Drive System | Ball speed reducer |
| Positioning Repeatability | ±0.02 degrees |
| Lost Motion | 0.1 degrees or less |
| Base | Material: Aluminum (white alumite treated) |
| Allowable Load Moment | 6.8N·m or less |
| Thrust load | 100N or less |
| Ambient Operating Temp./Humidity | 0 ~ 40°C, 85% RH or less (non-condensing) |

365

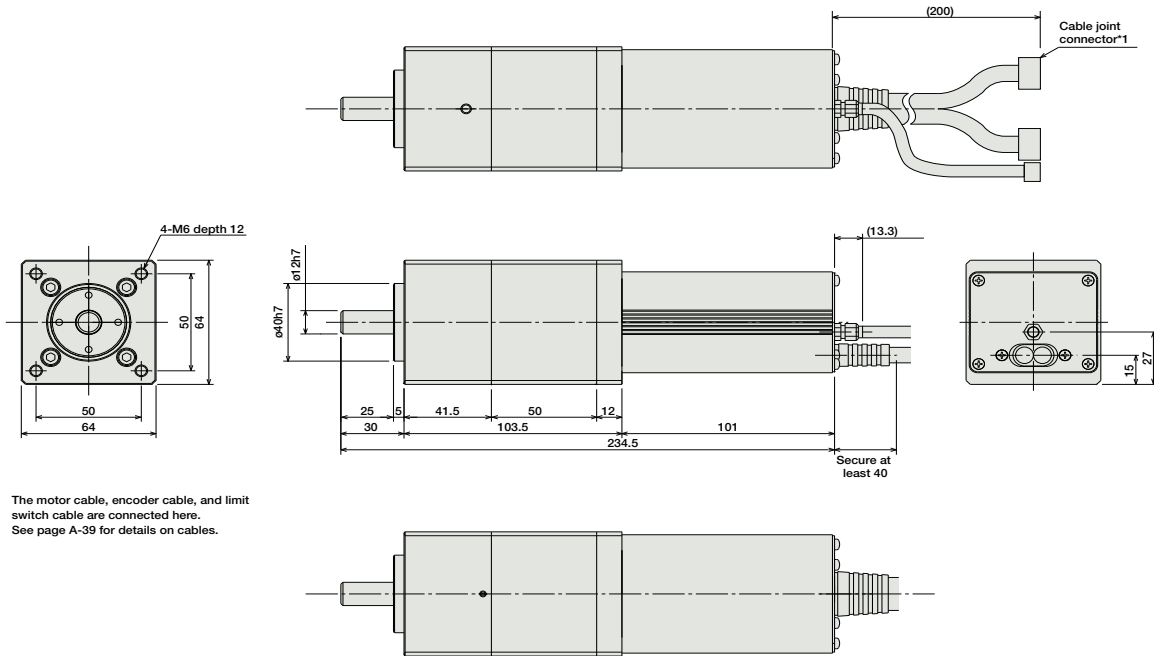
RCS2-RT6

- Slider Type
- Mini
- Standard
- Controllers Integrated
- Rod Type
- Mini
- Standard
- Controllers Integrated
- Table/Arm /Flat Type
- Mini
- Standard
- Gripper/ Rotary Type
- Linear Servo Type
- Cleanroom Type
- Splash-Proof
- Controllers
- PMEC /AMEC
- PSEP /ASEP
- ROBO NET
- ERC2
- PCON
- ACON
- SCON
- PSEL
- ASEL
- SSEL
- XSEL
- Pulse Motor
- Servo Motor (24V)
- Servo Motor (200V)
- Linear Servo Motor

Dimensions

For Special Orders P. A-9

* For more information on homing, see page A-79.



*1 The motor cable, encoder cable, and limit switch cable are connected here. See page A-39 for details on cables.

Weight (kg) 1.9

① Compatible Controllers

The RCS2 series actuators can operate with the controllers below. Select the controller according to your usage.

| Name | External View | Model | Description | Max. Positioning Points | Input Voltage | Power Supply Capacity | Standard Price | See Page |
|--------------------------------|---------------|------------------------|---------------------------------------------------------------------------|-------------------------|----------------------------------------------------------------------------------|-------------------------------------------------------------|----------------|----------|
| Positioner Mode | | SCON-C-60-NP-2-① | Positioning is possible for up to 512 points | 512 points | Single-phase AC100V Single-phase AC200V Three-phase AC200V (XSEL-P/Q only) | 360VA max. * When operating a 150W single-axis model | - | → P547 |
| Solenoid Valve Mode | | | Operable with the same controls as the solenoid valve | 7 points | | | | |
| Serial Communication Type | | | Dedicated to serial communication | 64 points | | | | |
| Pulse Train Input Control Type | | | Dedicated to pulse train input | (-) | | | | |
| Program Control 1-2 Axes Type | | SSEL-C-1-60-NP-2-① | Programmed operation is possible Operation is possible on up to 2 axes | 20000 points | | | - | → P577 |
| Program Control 1-6 Axes Type | | XSEL-2-1-60-N1-EEE-2-③ | Programmed operation is possible Operation is possible on up to 6 axes | 20000 points | | | - | → P587 |

* For SSEL and XSEL, only applicable to the single-axis model.
 * ① is a placeholder for the power supply voltage (1: 100V, or 2: single-phase 200V).
 * ② is a placeholder for the type name of XSEL (*J*, *K*, *P*, *Q*).
 * ③ is a placeholder for the type of power supply voltage (1: 100V, 2: single-phase 200V, or 3: 3-phase 200V).

- Slider Type
- Mini
- Standard
- Controllers Integrated
- Rod Type
- Mini
- Standard
- Controllers Integrated
- Table/Arm/Flat Type
- Mini
- Standard
- Gripper/Rotary Type
- Linear Servo Type
- Cleanroom Type
- Splash-Proof
- Controllers
- PMEC/AMEC
- PSEP/ASEP
- ROBO NET
- ERC2
- PCON
- ACON
- SCON
- PSEL
- ASEL
- SSEL
- XSEL
- Pulse Motor
- Servo Motor (24V)
- Servo Motor (200V)
- Linear Servo Motor



RCS2-RT6 **366**